

Temporary directions to new HoM ranch for June 2014

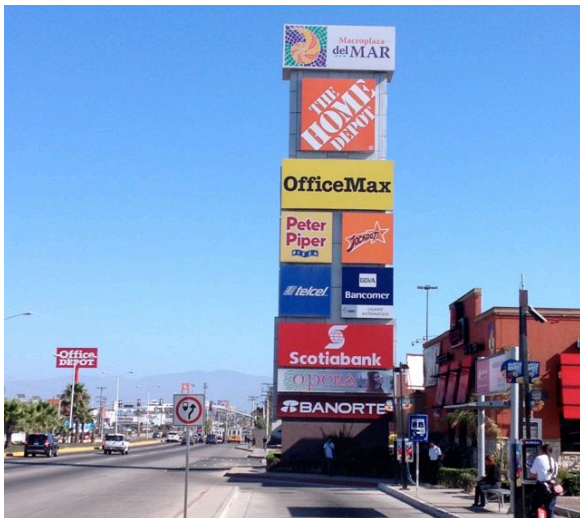
After you pass the big flagpole by harbor, continue through a good number of Signal lights and a car dealership on left and come to the first stop sign (just past old road to El Refugio) then you turn Left - set odometer to 0 (total 0 miles)



You then go 0.5 miles to Pemex and turn right on to Reforma, Hwy 1 (total 0.5 miles)



Take Hwy 1 south for 1.4 miles to home depot sign (just a marker to show you are on the right path) (total 1.9 miles)



In case you get lost in the beginning, find Home Depot sign and start here

4.1 miles ahead on the right, you will see a Pemex and Oxxo at a signal light which is one light before the turn off toward Baja Country Club (you will drop down into field area before You get to this light) (total 6.0 miles)



Continue on 0.6 miles to the Signal light after the Baja Country Club sign and turn left (total 6.6 miles)



Drive for 2.0 miles to high power lines and turn left on dirt road by signs to Rancho San Carlos (total 8.6 miles)



Go for 0.3 miles until road ends, then turn right at Rancho Aguacaliente sign (total 8.9 miles)



Go for 2.3 miles and road will Y, stay left down into wash at Rancho San Carlos Agua Termales sign (total 11.2 miles)



Go 2.4 miles to ranch entrance on left, turn left into new ranch (total 13.6 miles)



Wall may be painted,
and sign gone